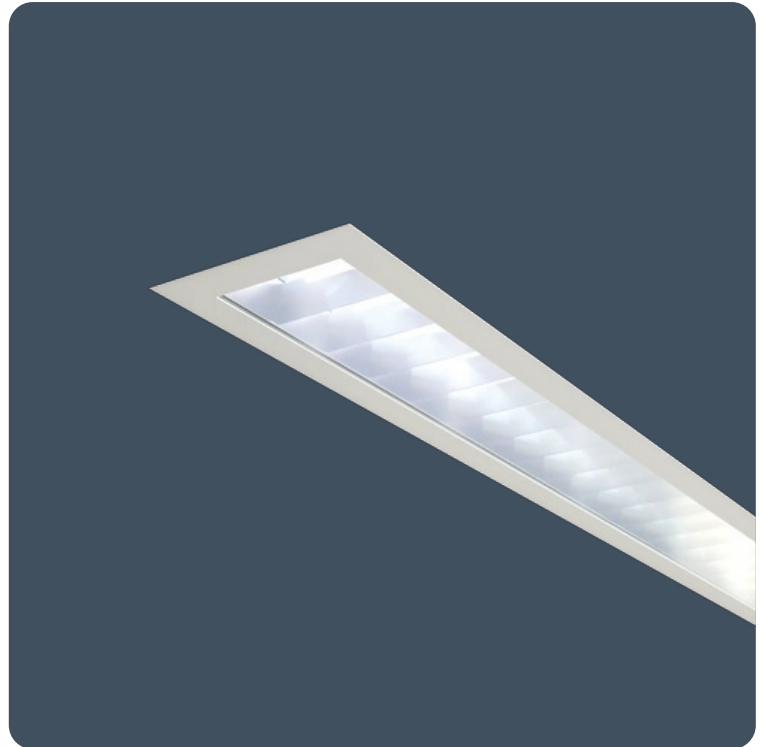


## Recessed luminaires for corridor applications

Recessed LED luminaires suitable for use in both modular and non-modular ceilings. Ultra low glare V-blade louvre or general low glare faceted cross-blade louvre set behind a clear toughened/safety glass cover, satin polycarbonate covers available.

Applications: hospital corridors.

- Snap fix screw-less frame
- Supplied with side arm suspension kit
- Fits 24 mm exposed T-bar ceilings (other ceiling type options available to special order)



IP54      Up to 84.2 LL/CW

### Specification

Mounting	Recessed	IP rating	IP54
Nominal size	1200 x 150 mm		

### Lighting

Optic	Faceted cross-blade louvre Satin diffuser V-blade louvre	Lumen output	3,535 lm - 4,380 lm
Efficacy	Up to 84.2 LL/CW		

### Emergency data

Emergency lumen output	283 lm - 316 lm	Emergency type	Maintained
Emergency duration	3 hours	Battery specification	Nickel Metal Hydride (NiMH)

### Power

LED power	46 W	Circuit power	52 W
-----------	------	---------------	------

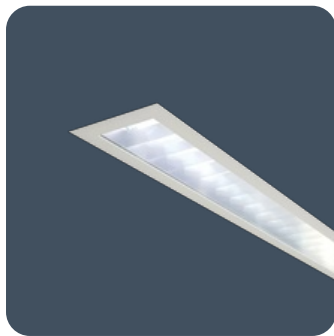
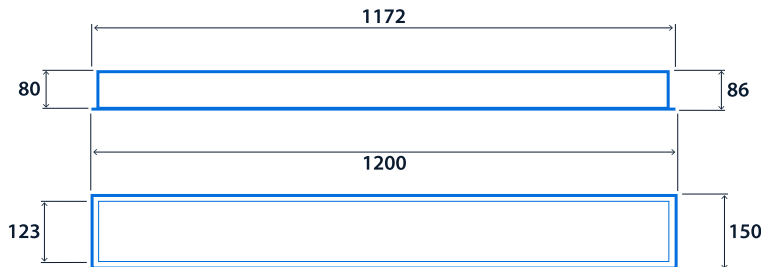
## LED characteristics

CRI	80+	Colour temperature	4000 K
Rated life (hours)	50 K - L70/B10		

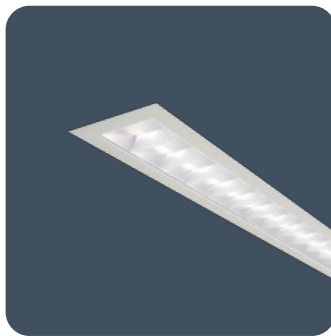
## Compliance

UKCA	Yes	CE	Yes
Energy efficiency class	This product contains a light source of energy efficiency class C	Thermoplastic rating	TP(a)

## Dimensions



V-blade



Faceted cross-blade



Satin polycarbonate



**Click or scan here**  
View GP Linear variants using our online filtering tool



# GP Linear



and designs without prior notice.