

## Supreme performance LED luminaires for arduous environments

The Visio Pro is rated IP66 and provides up to 46,000 lumens. Designed for arduous environments with its tough extruded aluminium body and IK10 rated polycarbonate cover, the Visio Pro is available in five wattages and four light distributions ensuring there is a solution for a wide range of mounting heights, spacings and applications. Extremely long life, fast installation and easy maintenance of integral emergency versions are key features of Visio Pro.

SmartScan versions have a unique sensor that can be optimised for use up to 18 m, maintaining excellent occupancy detection. SmartScan "wireless" versions eliminate the requirement for control cabling often associated with retro-fit installations.

Applications: Cold stores, general industrial areas, manufacturing, high level racking aisles, food manufacturing.

- Extruded aluminium body with die-cast ends and UV stabilised polycarbonate cover
- Four light distribution options
- Up to 46,000 lumen output
- Clip-fit stainless steel mounting brackets for fast installation (supplied)
- Smooth wipe clean surfaces, no dust traps
- Complies with food production standards IFS, HACCP and BRC
- Fitted with 2 m lead
- SmartScan wireless technology removes the need for control cabling. Ideal for retro-fit



IP66

Up to IK10

Up to 158.6 LL/CW

SMARTSCAN

LUXGUARD

## Specification

Mounting	Surface	IP rating	IP66
Impact rating	Up to IK10	Nominal size	800 mm 1400 mm 2000 mm
Max presence detection height	18 m		

## Lighting

Optic	Clear cover	Lumen output	15,925 lm - 46,000 lm
Efficacy	Up to 158.6 LL/CW		

## Emergency data

Emergency lumen output	865 lm - 975 lm	Emergency type	Maintained
Emergency duration	3 hours	Battery specification	Nickel Metal Hydride (NiMH)

## Power

LED power	101 W - 308 W	Circuit power	110 W - 322 W
-----------	---------------	---------------	---------------

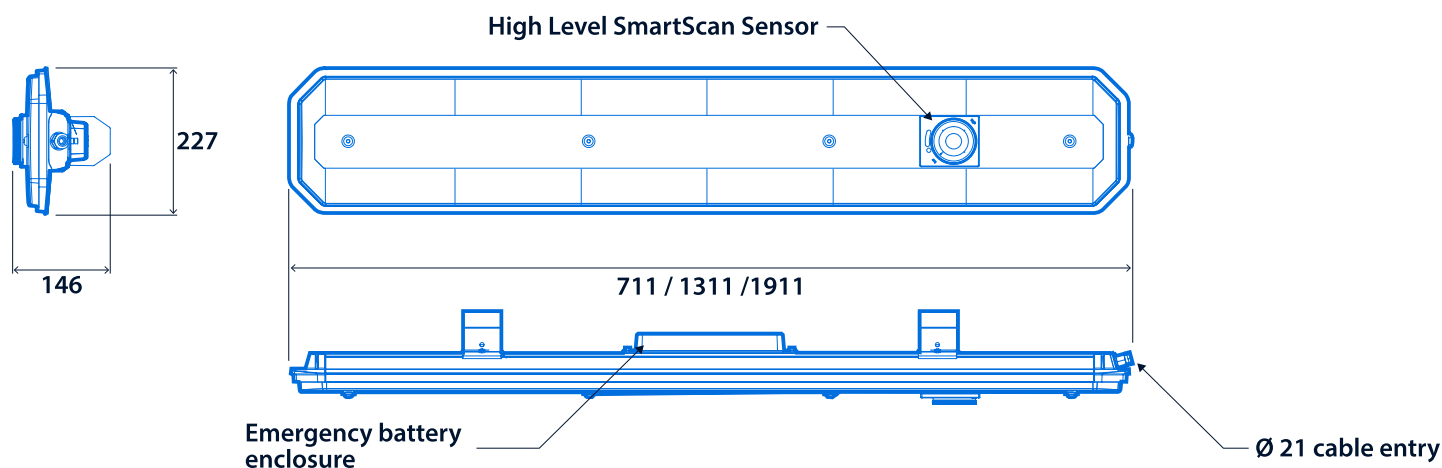
## LED characteristics

CRI	80+	Colour temperature	4000 K
Rated life (hours)	100 K - L70/B10		

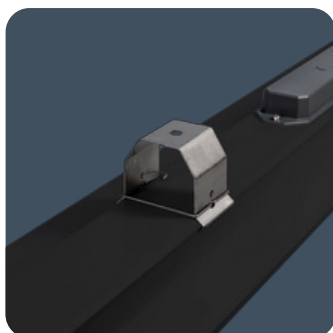
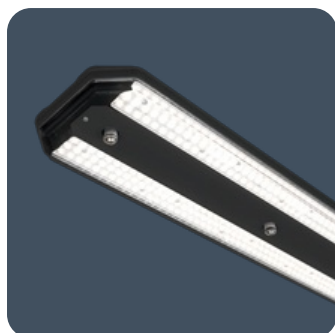
## Compliance

UKCA	Yes	CE	Yes
D Mark	Yes	Energy efficiency class	This product contains a light source of energy efficiency class B
Food production standards	BRC HACCP IFS		

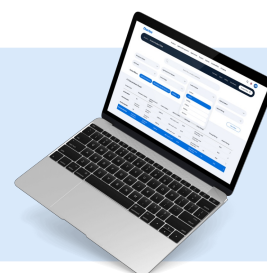
## Dimensions



# Visio Pro



**Click or scan here**  
View Visio Pro variants using  
our online filtering tool



Information is correct as of 12 Mar 2025, however must not be interpreted as a guarantee of individual product performance and/or characteristics. We reserve the right to alter specifications and designs without prior notice.