

## Suspended direct/indirect LED luminaires

High performance LED. Available as individually suspended, end to end or continuous versions using infill sections and corner joints. Ultra-slim-line, with excellent uniform upward light performance. Supplied pre-wired and fully assembled, complete with suspensions, for rapid installation.

Infill sections are complete with interconnecting wiring and can contain spotlights or emergency SmartScan LED downlighters.

Applications: Offices, school, libraries.

- Direct/indirect illumination
- Individual or continuous mounting options
- Supplied fully assembled
- Supplied with easily adjustable wire suspensions

Notes: It is recommended that a maximum of 10 Light Line Continuous luminaires are connected to each 10A fused light circuit



IP20

Up to 143.4 LL/CW

### Specification

Mounting	Suspended	IP rating	IP20
Max presence detection height	8 m		

### Lighting

Lumen output	4,015 lm - 6,485 lm	Efficacy	Up to 143.4 LL/CW
--------------	---------------------	----------	-------------------

### Emergency data

Emergency lumen output	370 lm	Emergency type	Maintained
Emergency duration	3 hours	Battery specification	Nickel Metal Hydride (NiMH)

### Power

LED power	24 W - 42 W	Circuit power	28 W - 48 W
-----------	-------------	---------------	-------------

## LED characteristics

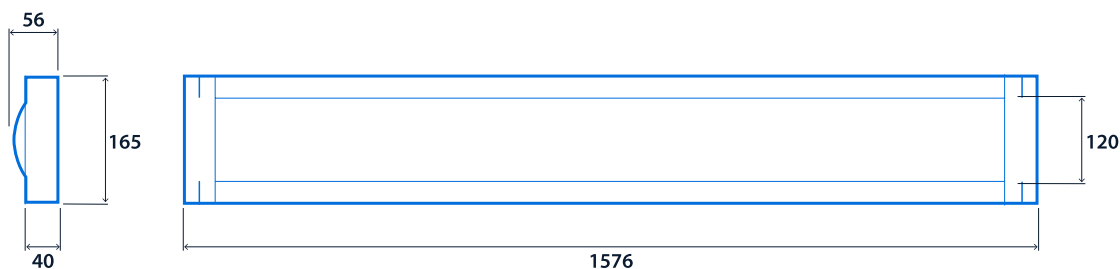
CRI	80+	Colour temperature	4000 K
Rated life (hours)	90 K - L80/B10		

## Compliance

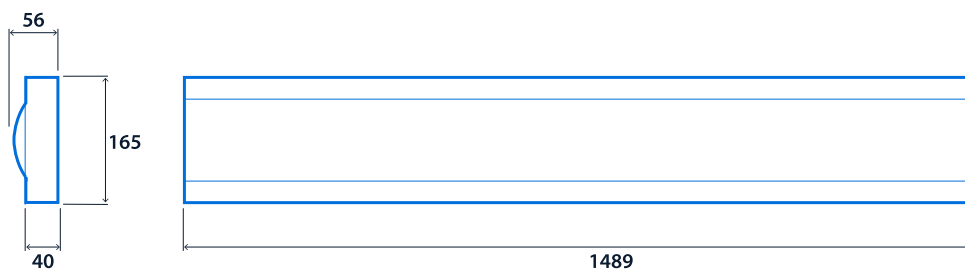
UKCA	Yes	CE	Yes
Energy efficiency class	This product contains a light source of energy efficiency class A		

## Dimensions

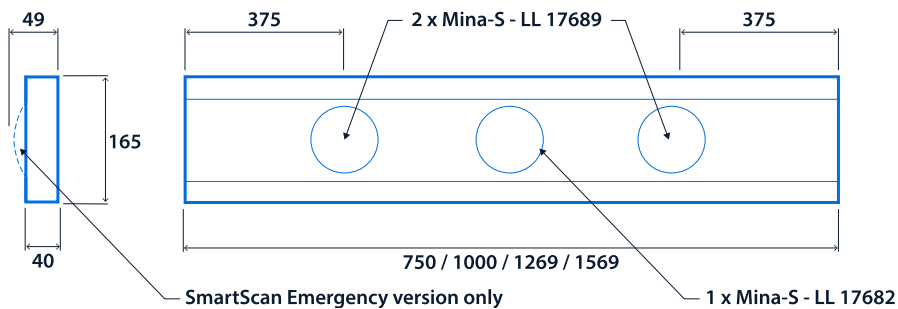
### Light Line Individual



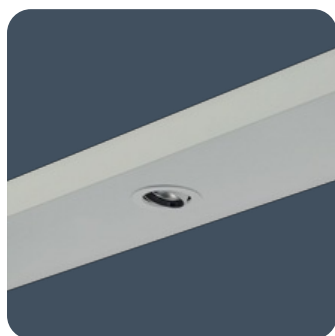
### Light Line Continuous



### Light Line Infill



# Thorlux Light Line



**Click or scan here**  
View Thorlux Light Line  
variants using our online  
filtering tool



Information is correct as of 12 Mar 2025, however must not be interpreted as a guarantee of individual product performance and/or characteristics. We reserve the right to alter specifications and designs without prior notice.