

## LED vandal-resistant luminaires

Luminaires suitable for internal or external use. Strong high-pressure die-cast aluminium body and flame-retardant polycarbonate cover. Edge-lit design distributes the light where it is needed reducing light pollution. Maintained emergency versions and microwave detector versions are available.

Applications: security areas, precincts, subways, passages and corridors.

- Strong high-pressure die-cast LM2 aluminium body
- 3 mm fire-retardant polycarbonate cover
- Two distribution versions optimised for wall or ceiling mounting
- Tamper-resistant cover screws as standard
- Optional bezel trim for semi-recessed mounting
- Microwave presence detector versions with stand-by light level feature
- SmartScan emergency version with wireless test status reporting
- Optional photocell control (not suitable for ceiling, semi-recessed or cornice mounting)



IP66
IK10
Up to 113.1 LL/CW
SMARTSCAN
LUXGUARD

### Specification

Mounting	Surface	IP rating	IP66
Impact rating	IK10	Max presence detection height	2.4 m

### Lighting

Optic	Clear cover	Lumen output	1,535 lm - 2,035 lm
Efficacy	Up to 113.1 LL/CW		

### Emergency data

Emergency lumen output	220 lm - 250 lm	Emergency type	Maintained
Emergency duration	3 hours	Battery specification	Nickel Metal Hydride (NiMH)

### Power

LED power	12 W - 16 W	Circuit power	15 W - 18 W
-----------	-------------	---------------	-------------

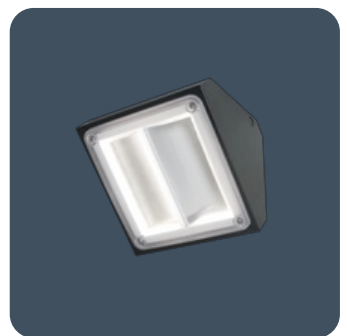
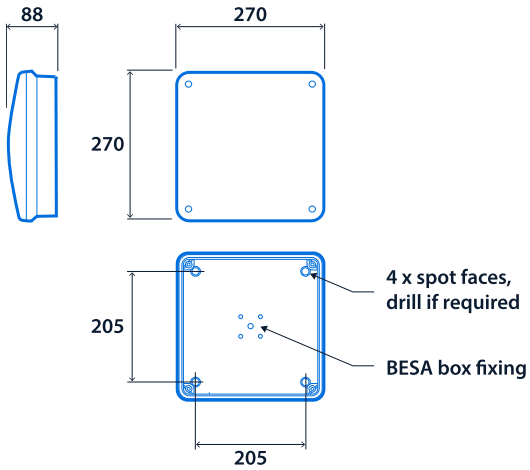
## LED characteristics

CRI	80+	Colour temperature	4000 K
Rated life (hours)	100 K - L80/B10		

## Compliance

UKCA	Yes	CE	Yes
Energy efficiency class	This product contains a light source of energy efficiency class B		

## Dimensions





**Click or scan here**  
View Prismalette Pro variants  
using our online filtering tool



Information is correct as of 12 Mar 2025, however must not be interpreted as a guarantee of individual product performance and/or characteristics. We reserve the right to alter specifications and designs without prior notice.