

Architectural surface mounted exit signs with SmartScan wireless communication

Innovative emergency exit signs with a modern minimalist design. Simple and tool free conversion from ceiling mounting to wall mounting with no need for additional parts. Available in black or white colour options with three hour, maintained operation and SmartScan wireless communication versions.

Applications: commercial environments, education, healthcare and retail.

- 23 m maximum viewing distance in accordance with BS EN 1838
- Low power consumption (2.3 W total)
- Can be ceiling or wall mounted through simple tool-free adjustment
- Integral downlight for exit illumination
- Status indicator shows operational condition
- Reliable Nickel Metal Hydride (NiMH) battery technology
- Simple to install, full status reporting SmartScan wireless communication versions



IP40

IK08

0 LL/CW

SMARTSCAN

Specification

Mounting	Surface	IP rating	IP40
Impact rating	IK08		

Emergency data

Legend type	ISO 7010 arrow down ISO 7010 arrow left ISO 7010 arrow left / right double sided ISO 7010 arrow right ISO 7010 arrow up	Maximum viewing distance	23 m
Emergency lumen output	70 lm	Emergency type	Maintained
Emergency duration	3 hours	Battery specification	Nickel Metal Hydride (NiMH)

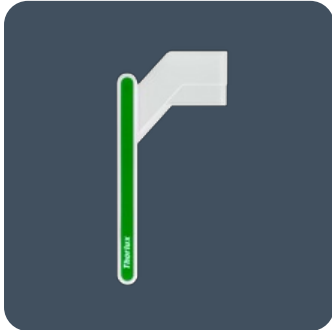
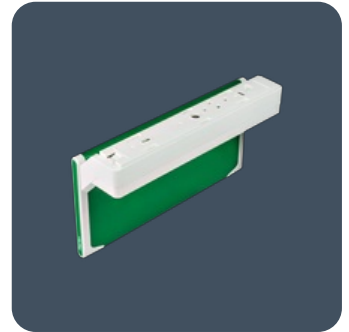
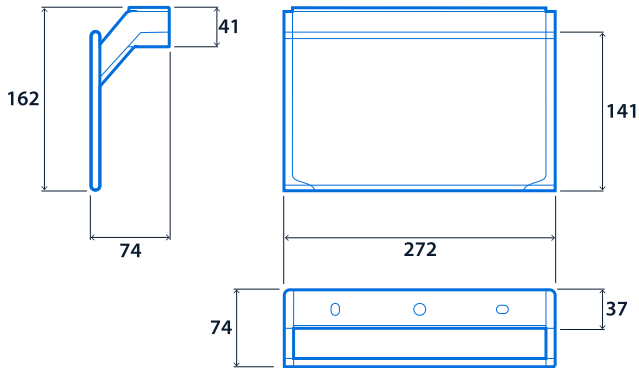
Power

Circuit power	2.3 W
---------------	-------

Compliance

UKCA	Yes	CE	Yes
------	-----	----	-----

Dimensions



Click or scan here
View D-Sign variants using
our online filtering tool



Information is correct as of 12 Mar 2025, however must not be interpreted as a guarantee of individual product performance and/or characteristics. We reserve the right to alter specifications and designs without prior notice.